

# Water Alliance Forum



Michael D. Minton, Esq.

Dean, Mead, Minton & Zwemer

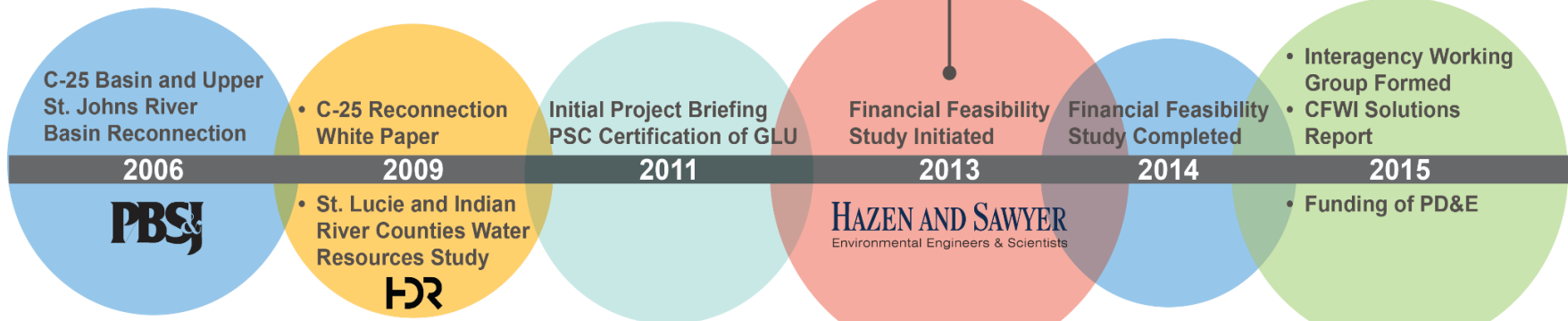
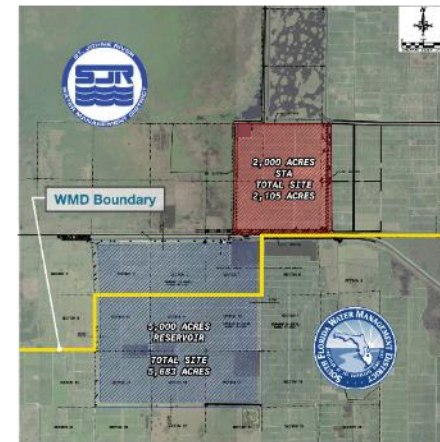
November 12, 2015

# Evolution of the Grove Land Reservoir and STA

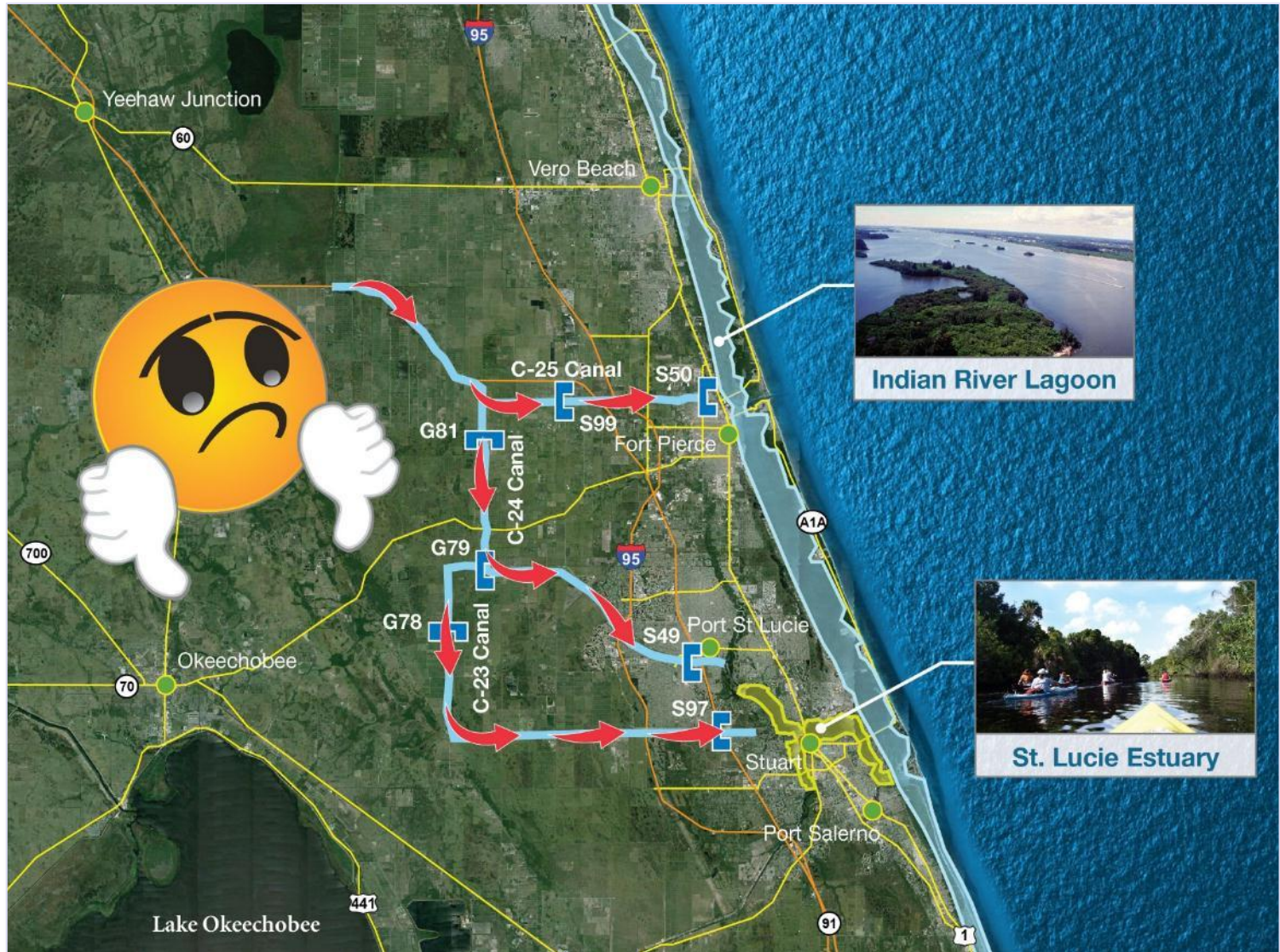
## C-25 Reconnection Project



## Grove Land Reservoir and STA

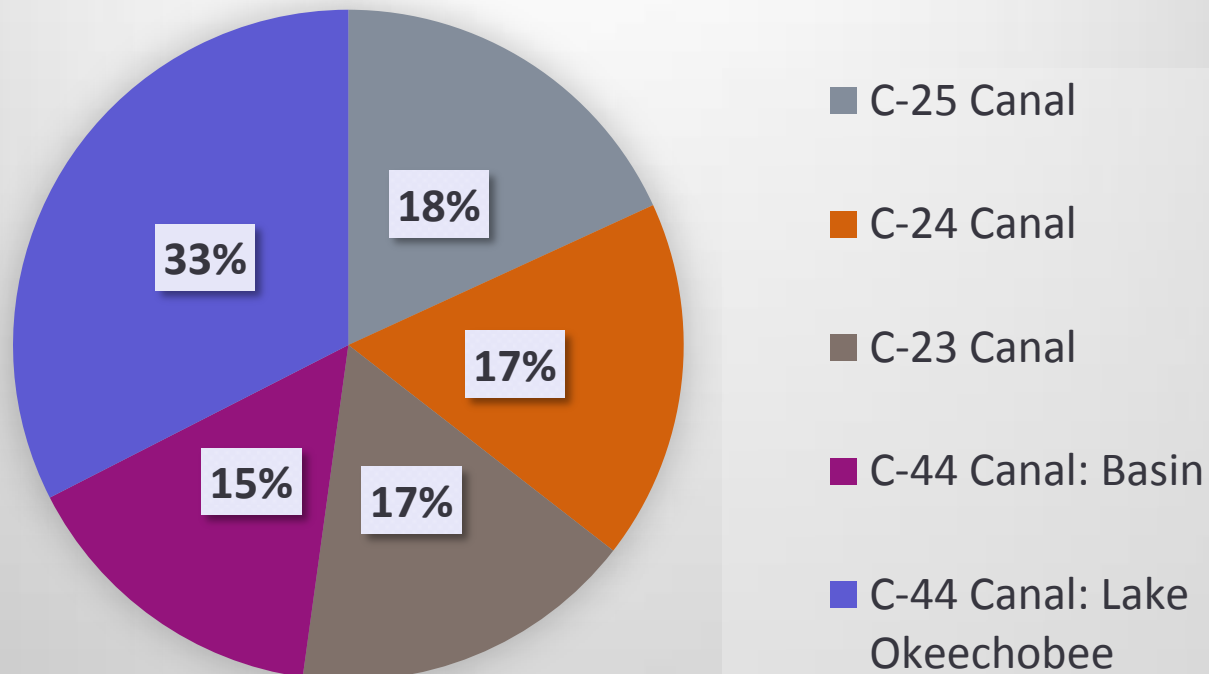


Excessive estuarine discharges causing eco- system havoc, lost income and value & health concerns



# Locally produced basin runoff is significant contributor to estuarine impacts

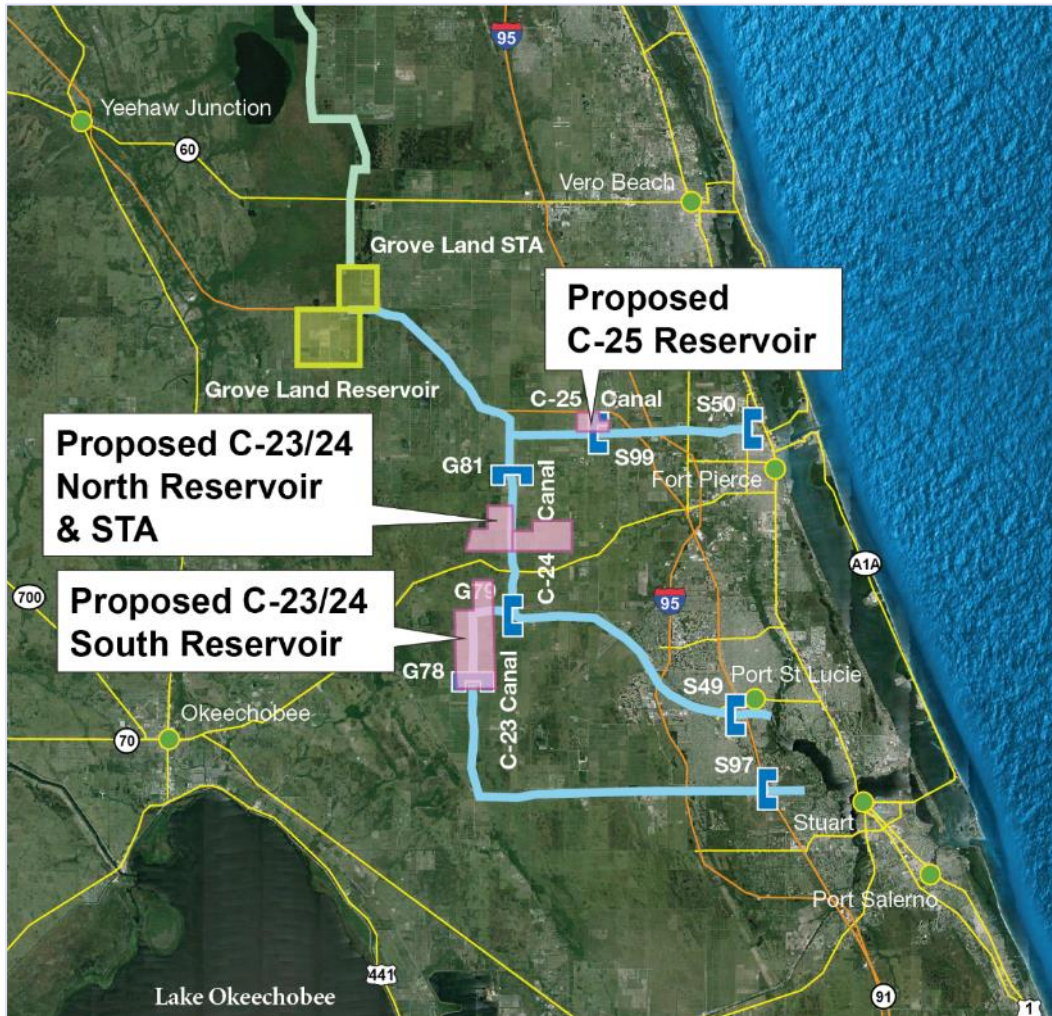
**Percent of Total Discharge from C-23, C-24, C-25, and C-44 Canals (801,220 acre-feet) to the St. Lucie Estuary and Indian River Lagoon**



# Annual IRL value to residents and visitors in five IRL counties – 2007 environmental status

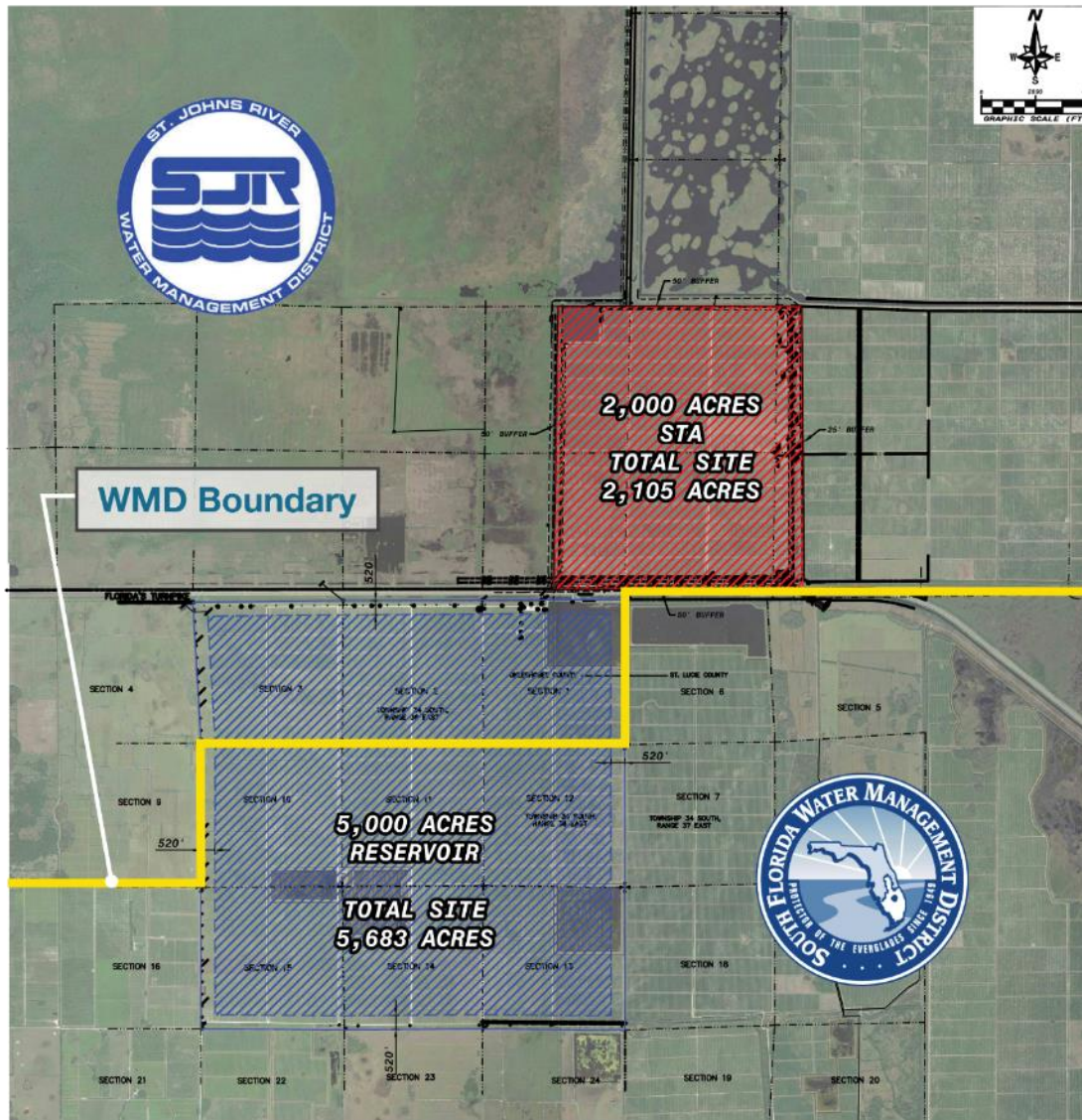
<b>Indian River Lagoon-Related :</b>	<b>2013 Value</b>
Recreational Expenditures (daily and boat-related)	\$1,485,084,000
Recreational Use Value	\$869,151,000
Non-Use Value of Lagoon	\$3,878,000
Real Estate Value (annual)	\$1,065,337,000
Income from daily recreation expenditures	\$718,247,000
Restoration, Research, Education Expenditures	\$103,796,000
Commercial Fishing Dockside Value	\$4,344,000
<b>Total Annual Value</b>	<b>\$4,249,837,000</b>
<b>Economic Contribution of the Daily Recreation Expenditures :</b>	
Output (value of production and services)	\$1,870,271,000
Resident Income	\$718,247,000
Employment, full- and part-time jobs	15,400
Tax revenue	\$127,344,000
Number of Recreation Person-days	11,150,000

# Grove Land Project offers great problem solving potential



- St. Lucie Estuary and Indian River Lagoon
  - Divert stormwater away from coastal estuaries
  - Reduce TP and TN loads
- Protect natural resources by augmenting water supply and serve environmental needs
- Increase flexibility from improved connection between WMDs
- Put in operation faster than CERP Reservoirs and STAs

# Super regional benefit potential as Grove Land Reservoir in SFWMD linked to STA in SJRWMD



# Project location ideal to deliver water to utilities and large water users

## Recharge:

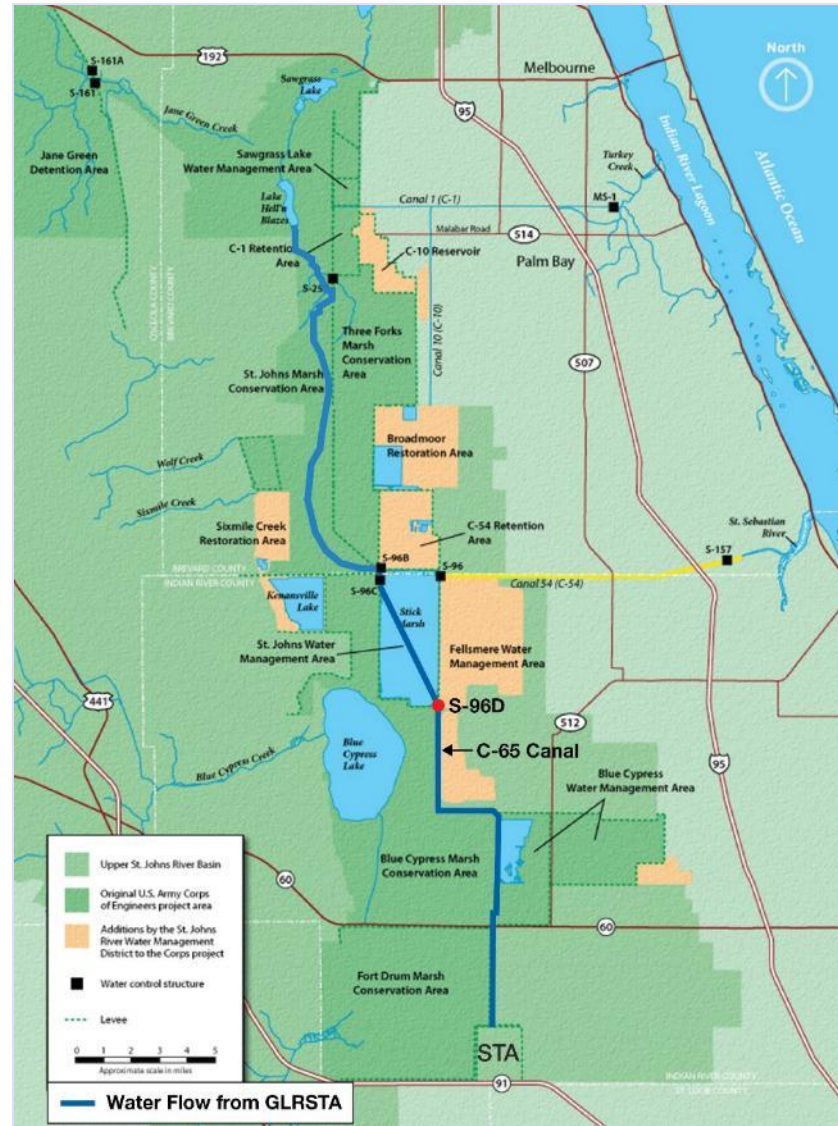
- St. Johns River through the Upper St. Johns River Basin
- Floridan Aquifer

## Direct Conveyance:

- Canals such as C-24 & C-25
- Pipelines

## Indirect Beneficiaries:

- Project “frees up” water from other sources
- Environmental enhancement / protection







# Central Florida Water Initiative

Projects	Total Quantity	Year 1 (MIL \$)	Year 2 (MIL \$)	Years 3-5 (MIL \$)	Total Cost (MIL \$)
Conservation (All)	36.8 mgd	3.8	6.1	24.5	170
Recovery Projects		2	1.5	10	50
DMIT Minimum Recommendations		3	7.5	23.1	34.1
Investigation		1.3	3.3	3.7	8.9
<b>Reclaimed Water Projects</b>					
Project RENEW	9.2 mgd			24.6	50.5
West Ditch Stormwater for Reuse Augmentation	0.9 mgd	1.6	2.3	11	28.2
160-ac Site Indirect Potable Reuse	4.5 mgd	0.6	0.7	6.4	7.7
TECO Polk Power Reuse	10 mgd				97
AFIRST/Altamonte Springs	4.5 mgd				15
<b>Stormwater Projects</b>					
Judge Farms Reservoir and Impoundment	5 mgd	0.5	17.7	6.8	28.3
Lake Wailes Stormwater Mitigation	1.4 mgd		1.2	12.4	13.6
Reedy Creek Watershed	4 mgd				1.6
<b>Surface Water Projects</b>					
St. Johns River/Taylor Creek Reservoir	54 mgd			10	637.6
St. Johns River near State Road 46	40 mgd				584.3
St. Johns River near Yankee Lake	40 mgd		2	20	536.7
<b>C-25 Grove Land Reservoir and Stormwater Treatment</b>	<b>122.4 mgd raw water</b>	<b>3</b>	<b>3</b>		<b>435.4</b>
Polk Regional Alafia River Basin	10 mgd				263.4
<b>Groundwater Projects</b>					
South Lake County Wellfield	12.7 mgd			60.7	116.5
Cypress Lake Wellfield	30 mgd	14	25.8	153.7	374.3
Southeast Polk County Wellfield	30 mgd	2.4	2.6	129.5	284.6
<b>Total Financial Plan</b>	224.5 mgd	32.2	73.7	496.4	2,775.7
<b>Total Solutions Projects</b>	415.4 mgd				3,737.7



Questions?  
mminton@deanmead.com  
772.464.7700

