

Regional Water Challenges

Central Florida Water Initiative

Florida Water Law & Policy

February 6-7, 2014

Harold A. Wilkening III

Director, Division of Strategic Deliverables
St. Johns River Water Management District

Hwilkening@sjrwmd.com

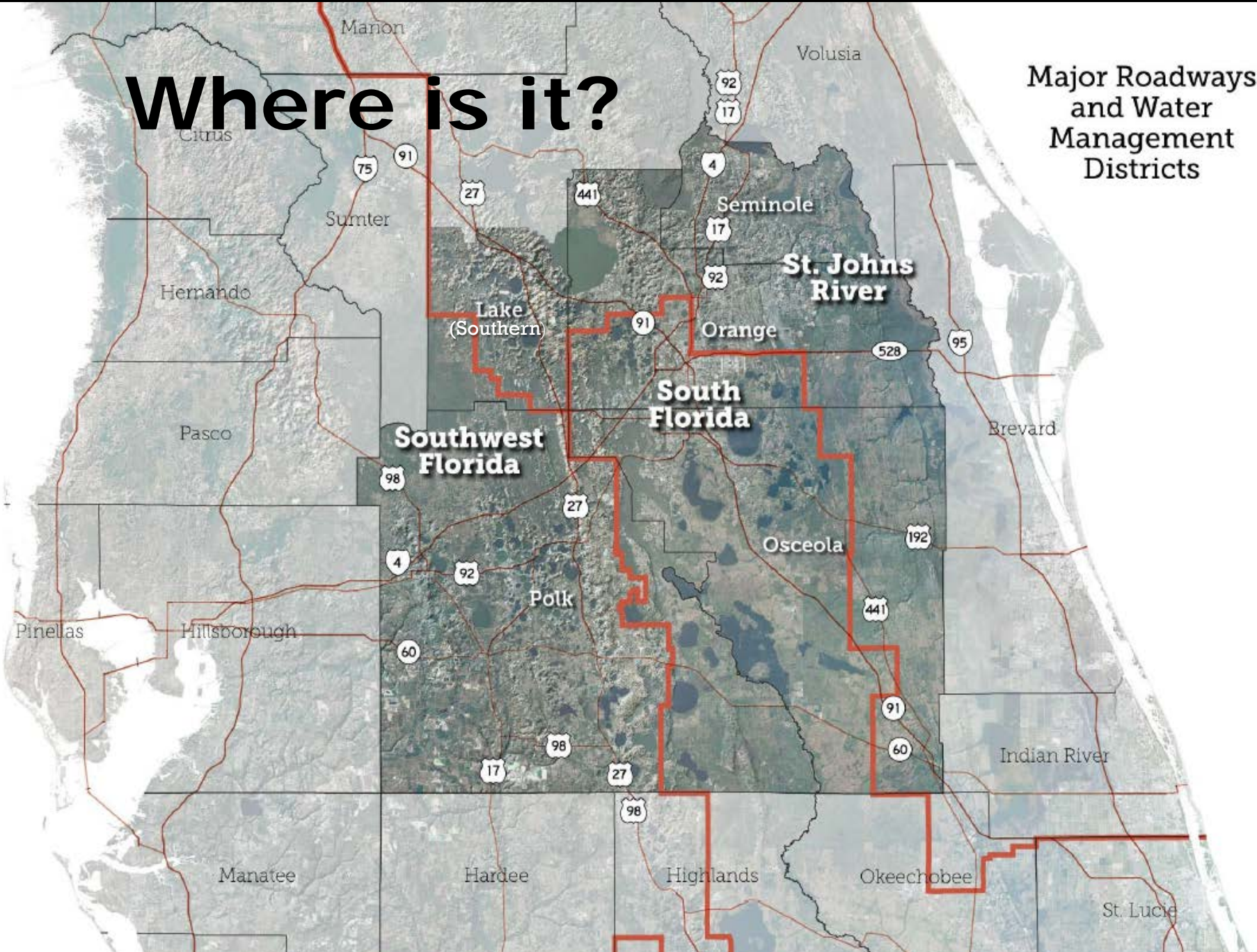
What is the CFWI?

A collaborative water supply planning effort to:

- Protect, develop, conserve and restore central Florida's water resources

Where is it?

Major Roadways and Water Management Districts

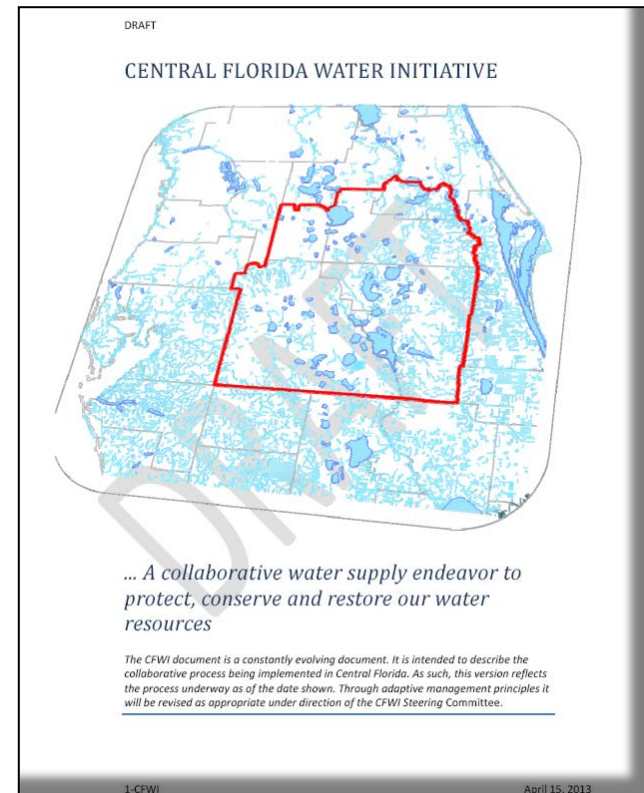


CFWI Steering Committee

- Includes one representative each from:
 - Florida Department of Agriculture & Consumer Services (FDACS)
 - Florida Department of Environmental Protection (FDEP)
 - St. Johns River Water Management District Governing Board
 - South Florida Water Management District Governing Board
 - Southwest Florida Water Management District Governing Board
 - Utilities

Steering Committee

- Primary oversight to guide a coordinated effort
- Guidance Document outlines the process based on three Guiding Principles



Guidance Document available at CFWIwater.com

Guiding Principles (simplified)

1. Identify sustainable quantities of groundwater sources
2. Develop strategies to meet water demands
3. Establish consistent rules

CFWI Timeline

Ongoing

Technical Teams:

- Data Monitoring & Investigations
- Environmental Measures
- Groundwater Availability
- Hydrologic Analysis
- MFLs & Reservations
- Regional Water Supply Plan

Nov. 30, 2013

Technical Work:

- Findings & Conclusions
- Draft Regional Water Supply Plan

Dec. 31, 2014

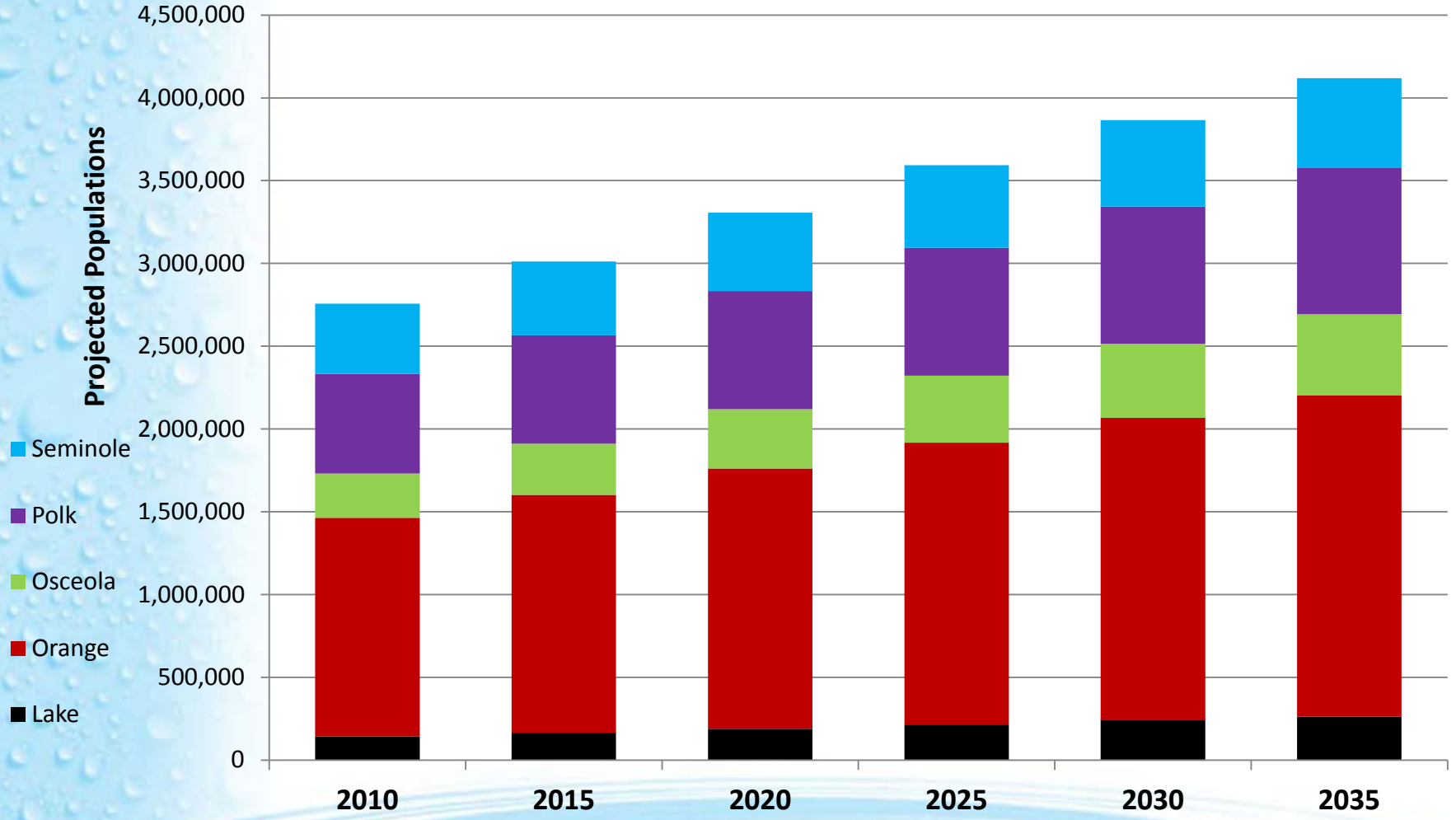
Solutions Work:

- Projects
- Regulatory
- Financing
- Monitoring

What are the Challenges?

- Reaching sustainable groundwater limits
- Meeting future demands on the area's water resources
- Overlapping regulatory programs

Projected Population



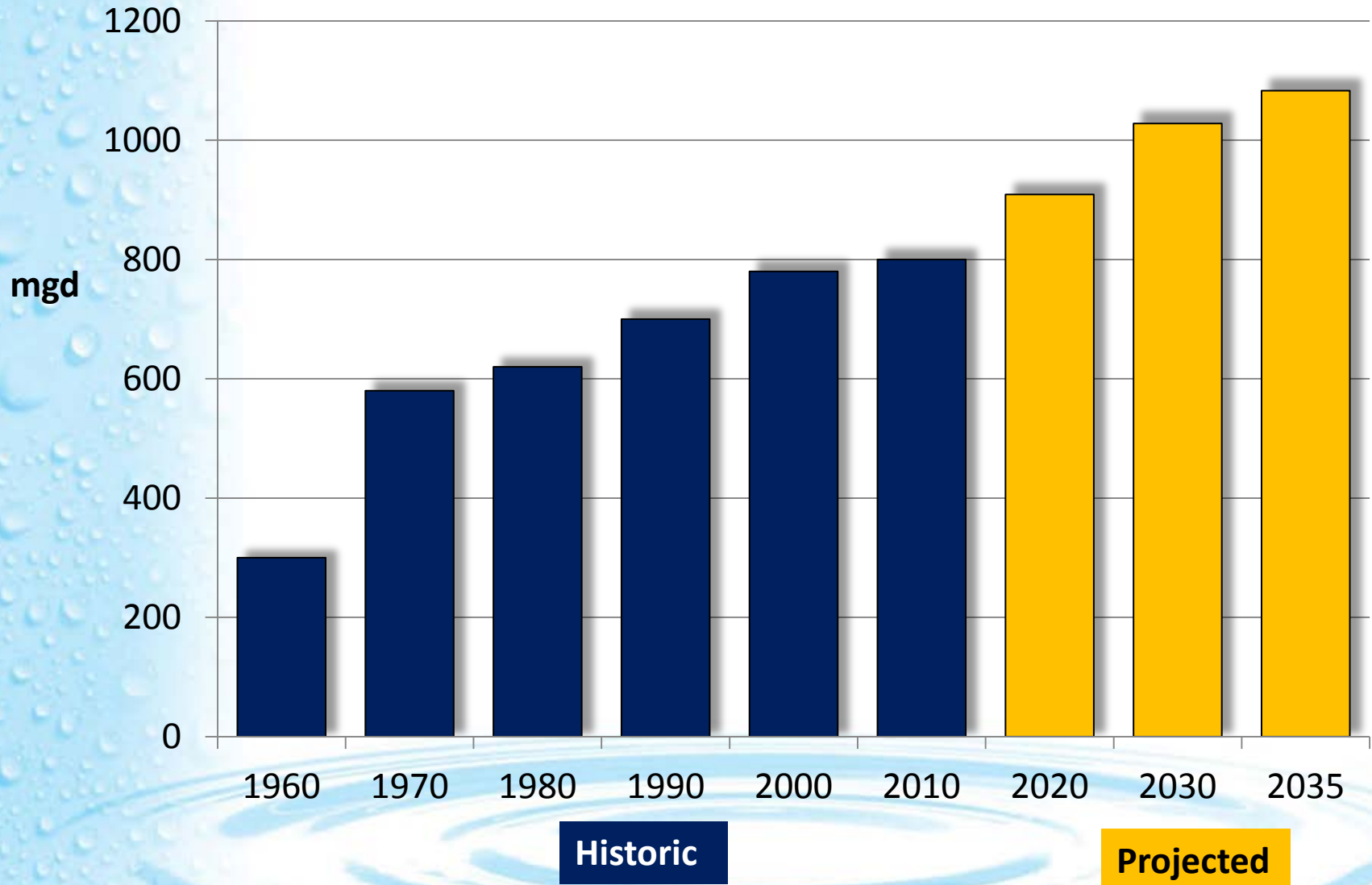
Projected Increase of 1.4 Million People

Addressing the Challenges

- One shared groundwater model
- One coordinated strategy for Minimum Flows & Levels (MFLs)
- One Regional Water Supply Plan (RWSP)

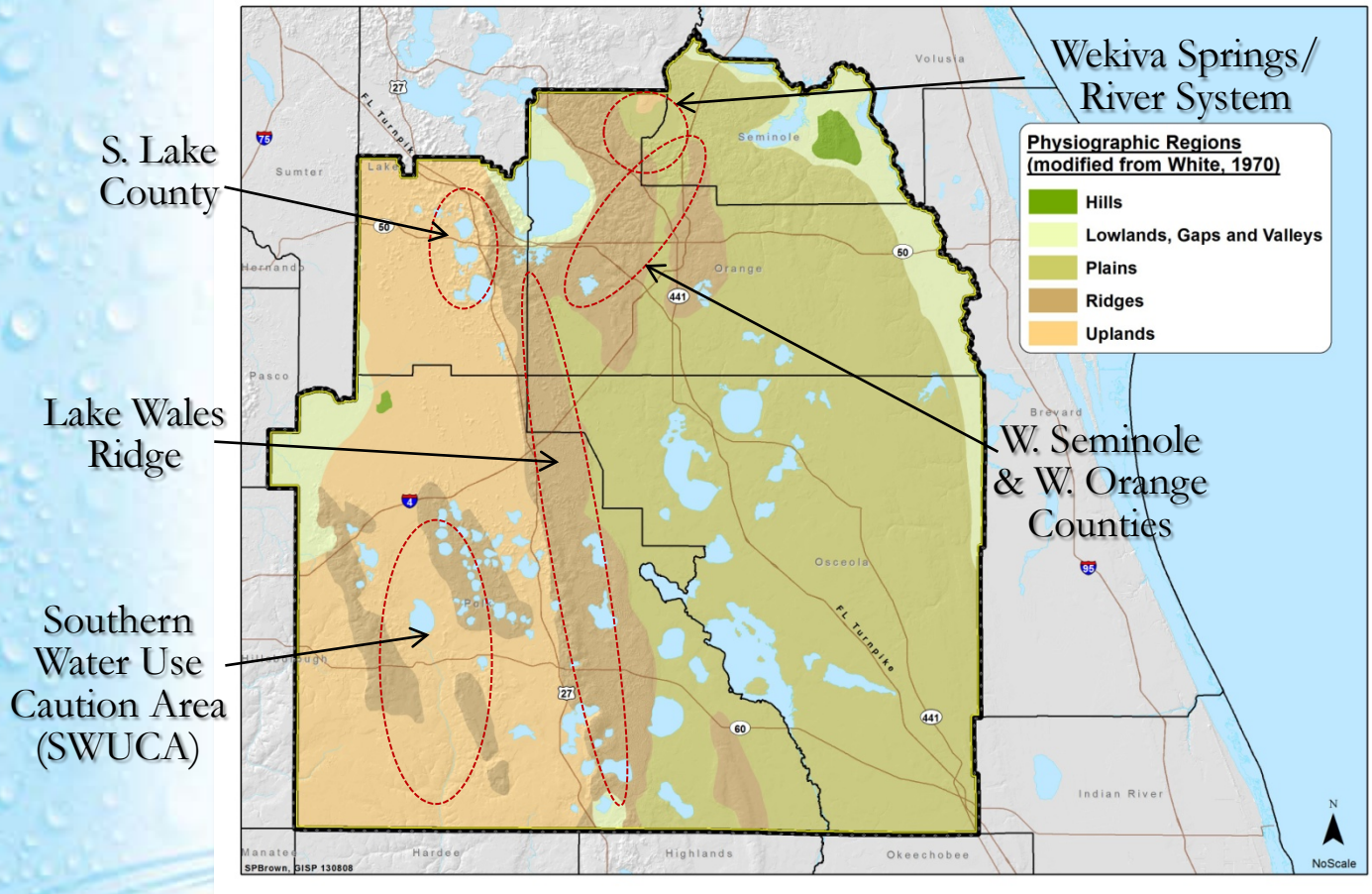
Water Use

All Classes



mgd— million gallons per day

Primary Areas Susceptible to Groundwater Withdrawals

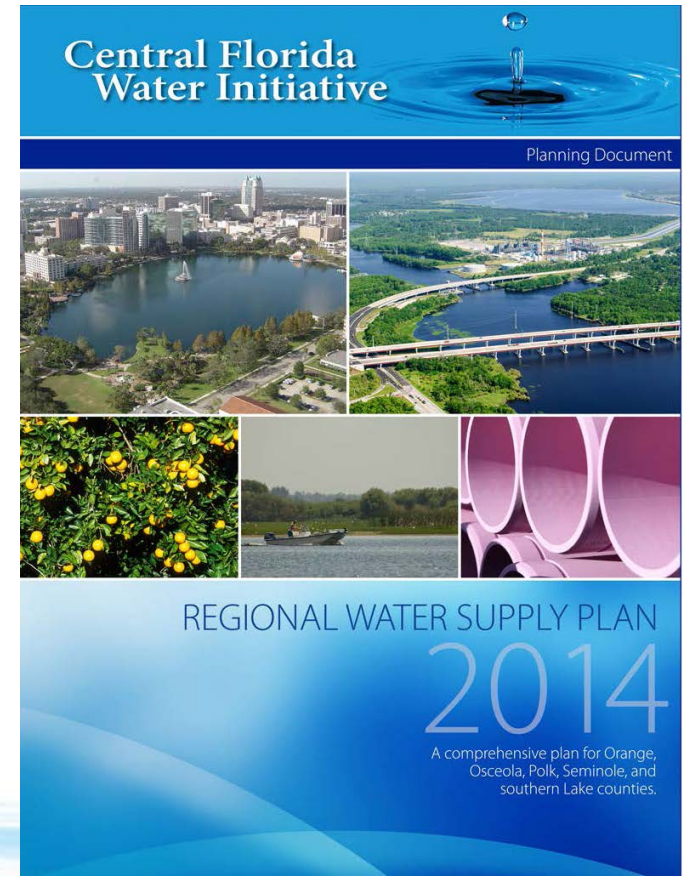


Findings

- Traditional groundwater sources can meet some, but not all projected and currently permitted needs in the CFWI.

One Plan for CFWI Region

- Developing first-ever Regional Water Supply Plan
- Collaborative effort between Districts, FDEP, FDACS, utilities and other stakeholders
- Technical teams provided strong scientific foundation for development of Plan
- Ensuring protection of the water resources and related natural systems



Regional Water Supply Plan Components

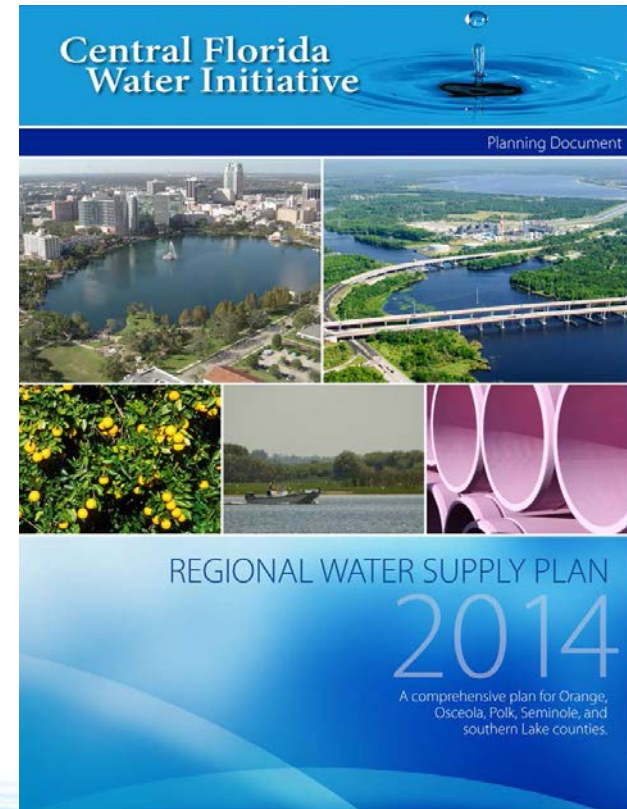
- Demands from all categories
 - 20-year planning horizon
- Evaluation of water resources
- How to meet the demands
 - Potential sources
 - Project options
- Funding mechanisms



Note: Updated every 5 years

Chapter 10 – Conclusion

- Groundwater Availability – 50 mgd
 - 250 mgd deficit
- Water Conservation Potential
 - 42 mgd
- Alternative Sources Potential
 - 391 mgd (435 with RW Supplementation)
- MFLs
 - 46 in CFWI
 - 10 currently below
 - Additional 15 projected to fall below



Importance of Public Involvement

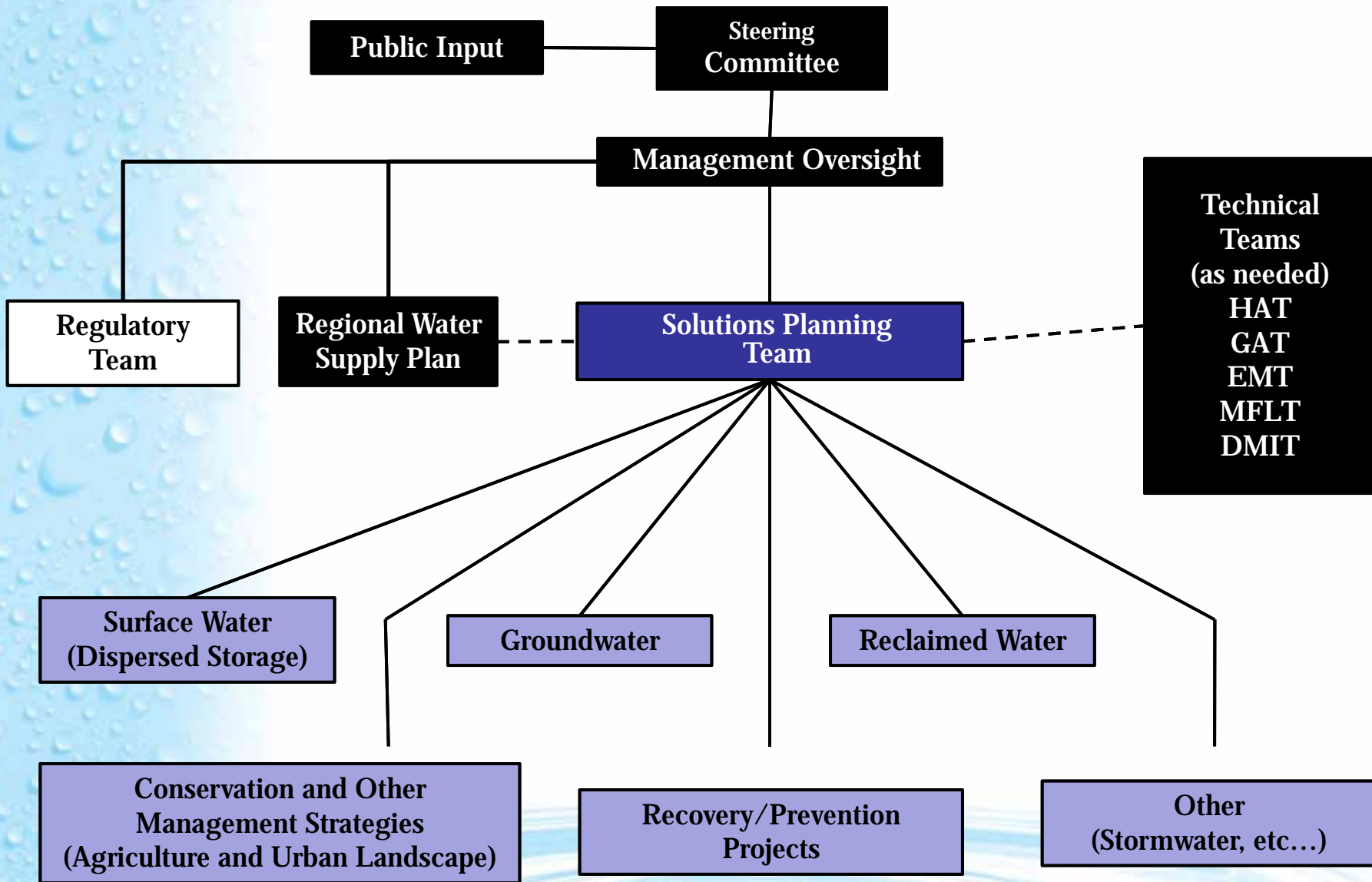
- Ensure plan reflects local needs
- Review of population projections and documents
- Coordination among:
 - County Commission/City Council
 - Utility staff
 - Planning staff
- Identify projects to meet future water demand



Next Phase: Solutions

- Strategies to meet future water demands:
 - Optimize use of existing groundwater
 - Identify demand management activities
 - Identify viable alternative supplies
 - Establish consistent rules

Central Florida Water Initiative



Solutions Planning Team

Southwest Florida Water Management District	Robert Beltran (Team Leader)
St. Johns River Water Management District	Woody Boynton
South Florida Water Management District	Len Lindahl
Florida Department of Environmental Protection	Tom Beck
Florida Department of Agriculture and Consumer Services	Ray Scott
Congress of Regional Leaders	Bob Dallari
Agriculture	Jim Fletcher
Public Water Supply Utilities	Andy Neff
	Gary Fries
Environmental Community	Nancy Prine
Business Community	Michael Minton

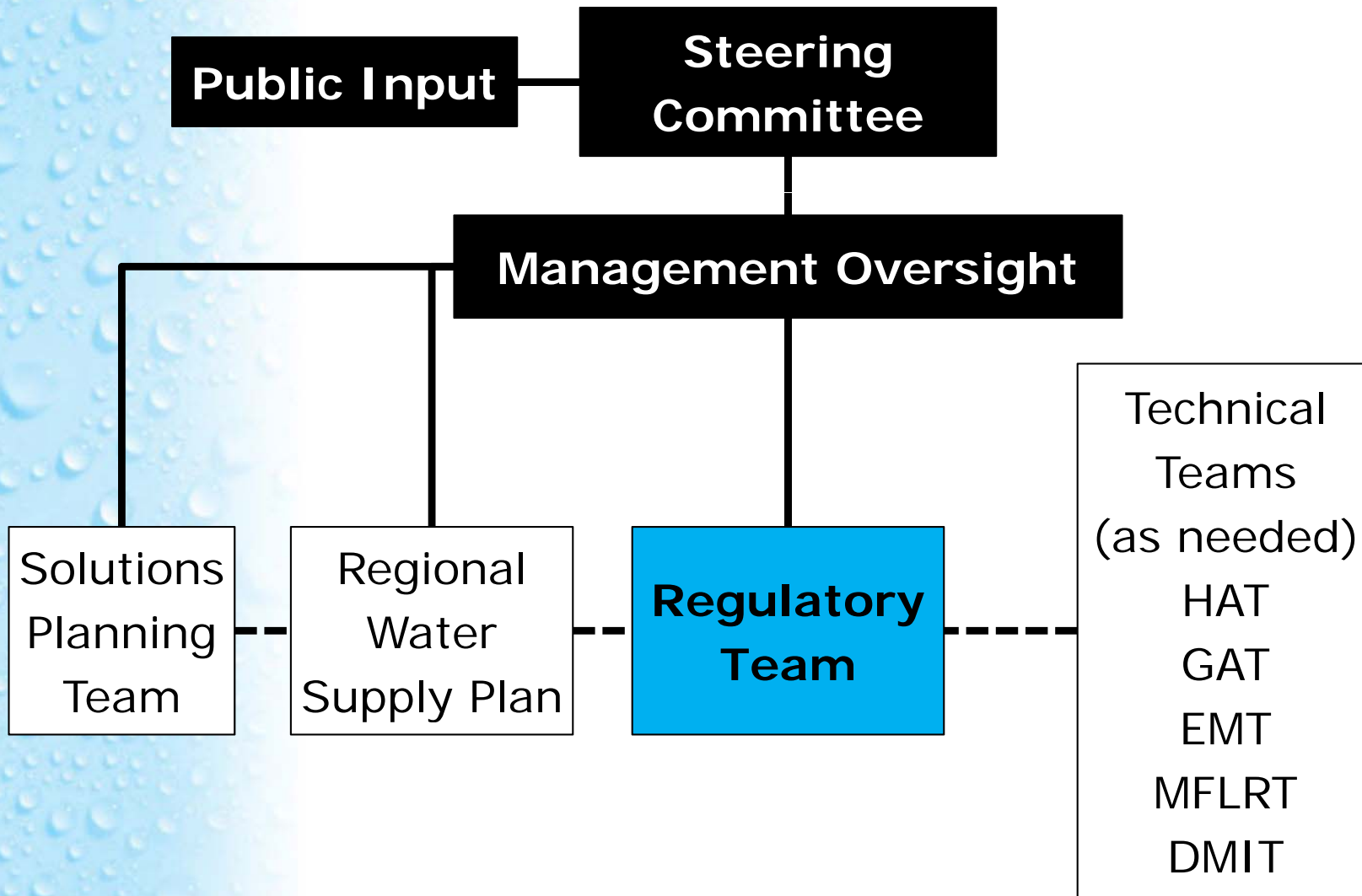
Solutions Team Goal

Develop alternatives to meet water demands by optimizing the use of existing groundwater and by identifying viable conservation and other management strategies, viable alternative and non-traditional water supplies, areas that may require recovery or resource protection and areas where regulatory and water resource protection strategy consistency may be needed.

CFWI Water Supply Project Summary

Project Category	Project Options	Estimated Water Generated (mgd)	Total Capital (\$M)
Surface Water	15	184 to 209	\$1,871 to \$2,035
Brackish Groundwater	35	45 to 75	\$482
Fresh Groundwater	TBD	0 to 75	TBD
Reclaimed Water	TBD	TBD	TBD
Conservation & Other Management Strategies (AG & Urban Landscape)	TBD	42	\$451
Recovery/Prevention	TBD	TBD	TBD
Other - Stormwater, Dispersed, Storage, etc.	2	4	\$27
Total	136	275 to 405	\$2,831 to \$2,995

Central Florida Water Initiative



Regulatory Team Objectives

- **Develop options for consistent regulations (including Legislative) to implement the solution strategies identified in the CFWI process.**
- **Assist with resource recovery strategies.**
- **Provide for equitable and predictable review of consumptive use permit applications among the districts.**

Regulatory Team Membership

Team Leader	Len Lindahl, SFWMD
Water Management Districts	Mike Register, SJRWMD Alba Más, SWFWMD Sharon Trost, SFWMD
Florida Department of Environmental Protection	Janet Llewellyn, Office of Water Policy
Florida Department of Agriculture & Consumer Services	Steve Lamb, Federico Lamb & Associates
Environmental	Jane Graham, Audubon Florida
Public Water Supply Utilities	Krystal Azzarella, Polk County Debbie Bradshaw, OUC
Legal Counsel	Mary Ellen Winkler, SJRWMD Laura Donaldson, SWFWMD Beth Ross, SFWMD Ed de la Parte, Public Water Supply

Central Florida Water Initiative

Home

Meetings

Regional Water Supply Plan

Minimum Flows and Levels and Water Reservations

Hydrologic Analysis

Environmental Measures

Data, Monitoring and Investigations

Groundwater Availability

CFWI Resources

CFCA Resources

Contacts

Overview of the Central Florida Water Initiative

Florida's water management districts are committed to finding new ways of meeting the demand for freshwater. Historically, the Floridan aquifer system has supplied the vast majority of the water used in the central Florida area. The boundaries of three water management districts — the St. Johns River Water Management District, South Florida Water Management District and Southwest Florida Water Management District — meet in the area. The three districts are studying whether the Floridan aquifer system is reaching its sustainable limits of use and exploring the need to develop supplemental sources of water.

In the past, the three districts worked independently to resolve water resource issues, but the decisions of one district can impact the water resources of another. Today, the districts are working collaboratively with other agencies and stakeholders to implement effective and consistent water resource planning, development and management through the Central Florida Water Initiative (CFWI).

The CFWI builds on the prior work of the Central Florida Coordination Area (CFCA). Both efforts focus on an area that includes southern Lake, Orange, Osceola, Seminole and Polk counties. The three water management districts, along with the Florida Department of Environmental Protection (DEP), Florida Department of Agriculture and Consumer Services (DACS), regional public water supply utilities and other stakeholders are collaborating to develop a unified process to address central Florida's current and long-term water supply needs.

Guiding principles

The guiding principles of the CFWI are to:

- 1. Identify the sustainable quantities of traditional groundwater sources available for water supplies that can be used without causing unacceptable harm to the water resources and associated natural systems.
- 2. Develop strategies to meet water demands that are in excess of the sustainable yield of existing traditional groundwater sources.
- 3. Establish consistent rules and regulations for the three water management districts that meet their collective goals, and implement the results of the Central Florida Water Initiative.

Additional information can be found at ***cfwiwater.com***